



28 June 2019, Sarclo



31 August 2019, Duo Marzella and Sophie Sciboz



1st September 2019, dance school Anne Pierroz

## PLANIFY YOUR VISIT

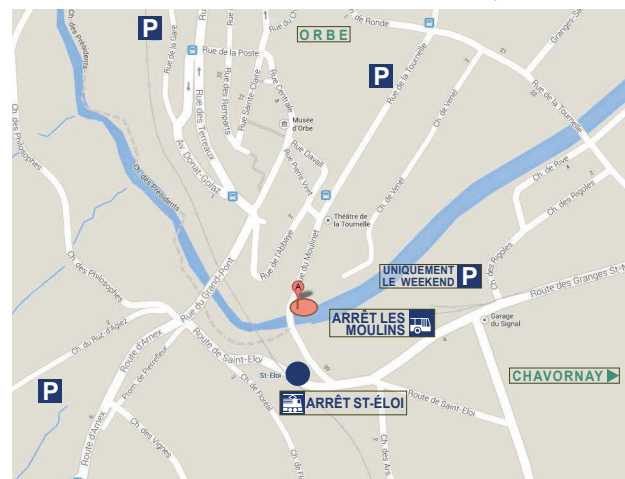
### Entry fees

Adults	CHF 12.-
Children up to 16 yrs	CHF 6.-
Retirees, disabled, unemployed	CHF 10.-
Groups of min 8 visitors	CHF 9.-
with croissant and coffee	CHF 15.-

### Business hour

Mon - Fri	11 am-5 pm
Sun + holidays	2 pm-6 pm
Saturday	on demand
Other hours	on demand
Building rent	on demand

Guided tours of the mill and its exhibitions, on demand and by appointment



PATRIMOINE AU FIL DE L'EAU TRAIN PLACES DE PARCS DIRECTIONS

### How to get here

- Stop in Chavornay Station, connect with the bus to Orbe. Stop on request «Les Moulins».
- Exit motorway Chavornay, take direction Orbe. Parking places available according to the plan.
- Stop in Chavornay station, take the train to Orbe. Stop on request «St-Eloi» Station.
- Parking places available according to the plan.



### Museum

Rue du Moulinet 33, 1350 Orbe  
Tel. 024 441 68 42  
[www.eau21.ch](http://www.eau21.ch)  
[patrimoine.orbe@eau21.ch](mailto:patrimoine.orbe@eau21.ch)



### Shows

Tel. 024 441 68 42  
[www.moulin-mouline.ch](http://www.moulin-mouline.ch)  
[pavuitel@moulin-mouline.ch](mailto:pavuitel@moulin-mouline.ch)

**PATRIMOINE  
AU FIL  
— DE —  
L'EAU**

A unique experience of a visit in  
the history of cultural heritage

**12th season**

**Orbe  
2020**

5 April to  
30 September

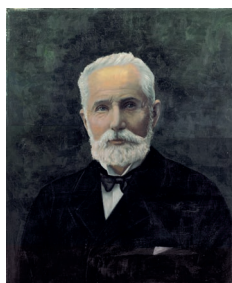


**PATRIMOINE  
AU FIL  
— DE —  
L'EAU**



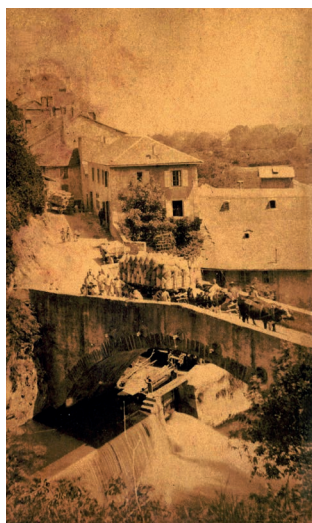


## LES MOULINS ROD



Jules Rod, founder of the Rod's mills 1871

**Rod mills** are located on the site of an old mill; whose interior walls remain. A flour mill developed there around 1404, evolving at the pace of technical and industrial progress, closing definitively in 1997. The traces of these activities are still visible.



**The Orbe River** and the region are in the spotlight with the presentation, in the footbridge, of the villages that border it from Vallorbe to Orbe. You will be able to discover aerial photos and unpublished ancient photos, presentations and information on the Roman villa of Orbe, the Nestlé factory and many other subjects...



### First space

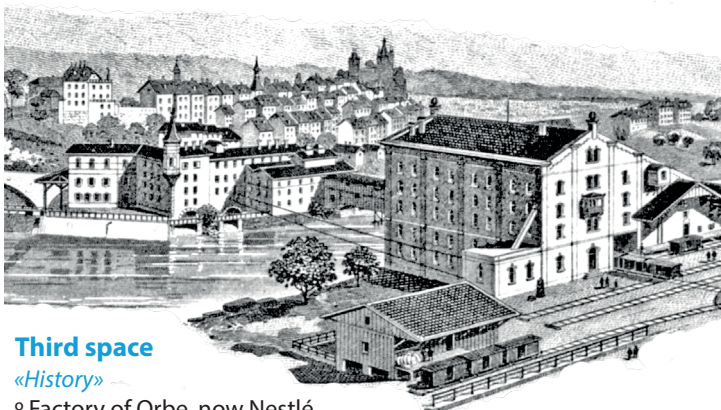
«Once upon the time there were mills»

- Showcasing the company's history
- Photographs of the region of Orbe from yesterday to today

### Second space

«Renewable energy»

- From yesterday to today
- Visit to the old canal



### Third space

«History»

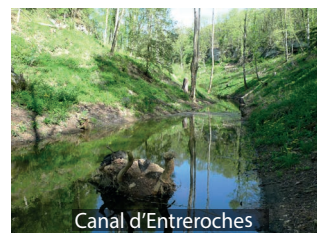
- Factory of Orbe, now Nestlé



### Fourth space

«From Vallorbe to Yverdon»

- Presentation of villages along the river Orbe
- Remarkable sites of the Joux Valley



### Fifth space

«Canal d'Entreroches»

- The Swiss canal project the Rhone to the Rhin
- Transport on western Switzerland waterways
- Corrections of the Jura waters to the Wahlen plan



### Sixth space

«The beaver of the plain of the Orbe»

- After being hunted all over Switzerland, the beaver, a protected species, is now welcome in some areas of our rivers

## THE COLLECTIONS

## REGIONAL HERITAGE

Within a radius of 9 km around the plain of the Orbe, lies a forest nature reserve of 300 hectares.

This protected area located in eight different municipalities, all located on the river course between Vallorbe and Orbe. Part of this area is classified as a nature reserve and part as a forest reserve. They keep protected wildlife strong.



## MOULIN-MOULINE

Moulin-mouline is held every year at the end of August at the beginning of September, in the magical setting of the former Rod Orbe mill, an authentic and patrimonial site that once had a huge industrial adventure. The stage has been expanded since its inauguration with 110 seats and nearly 4'200 people participated, both in the audience and on stage, supported by some 20 volunteers.

